



# *The Illinois Prairie Path* Spring 2002 **NEWSLETTER**

## *Join our Annual Cleanup Saturday, April 27*

**I**n observance of Earth Day 2002, The Illinois Prairie Path not-for-profit corporation has scheduled its annual cleanup for Saturday, April 27. Volunteers are needed!

Our goal this year is to clean all 61 miles of the Illinois Prairie Path (IPP) and all 12 miles of the Great Western Trail (GWT). Hopefully, we can duplicate the excellent cleanup that was done last year for Earth Day.

To be a participant in the Earth Day 2002 trail cleanup, you can either take a trash bag to one of the two trails and join in at anytime or contact one of the coordinators on page 3 for specific cleanup needs or instructions.

In both DuPage County and Kane County, full trash bags may be left at each road intersection along the IPP and the GWT and the bags will be picked up.

It is recommended that volunteer groups contact one of the coordinators listed on page 3. The coordinators may recommend to some groups that they clean specific sections of a trail.

**Sign-up and Refreshment Tables**  
Villa Park, Glen Ellyn, and Wheaton will have Earth Day registration and refreshment tables set up on the Illinois Prairie Path from 9 a.m. to 12 noon, rain or shine. Volunteer leaders at these registration and refreshment tables will coordinate trail cleanup sections and also provide free refreshments and trash bags. In addition, a multi-colored Illinois Prairie Path trail map will be provided to each cleanup

---

*"To participate in  
the IPP Earth Day 2002  
cleanup, take a trash  
bag to the Path and join  
in at any time ."*

---

volunteer. The Illinois Prairie Path not-for-profit corporation funds these Earth Day registration and refreshment tables.

**Wheaton:** The Wheaton Environmental Improvement Commission will manage Wheaton's Earth Day cleanup of the Illinois Prairie Path on Saturday, April 27, between 9 a.m. and 12 noon



from a table in Stevens Park at the intersection of Lincoln Avenue and the IPP Elgin Branch.

**Glen Ellyn:** The Glen Ellyn Environmental Commission will manage Glen Ellyn's Earth Day cleanup of the Illinois Prairie Path on Saturday, April 27, between 9 a.m. and 12 noon.

**Villa Park:** The Villa Park Pride Commission will manage Villa Park's Earth Day cleanup of the Illinois Prai-

*(Continued on page 3)*

## **"Save the Special 8" Update**

**T**he Illinois Prairie Path has launched an effort to "Save the Special 8" in unincorporated Glen Ellyn. The IPP opposes development of these 8.3 acres because of the land's environmental importance and to prevent a new street crossing on the Illinois Prairie Path, according to Don Kirchenberg, IPP president.

### **Preservation Update**

During the past few months, a number of public meetings were held with various governmental agencies. Thanks to the many people who came out to support this cause — your presence made a great impact on our local officials. On February 19, a unanimous decision was made by the DuPage Forest Preserve Commission to acquire the property through condemnation because of the disparity between the owner's asking price and the Forest Preserve offer.

*(Continued on page 2)*

## *The Illinois Prairie Path Newsletter*

This newsletter is published by  
The Illinois Prairie Path Board  
of Directors.

**Editor:** Nancy Wasielewski

**Address correspondence to:** The  
Illinois Prairie Path, P.O. Box  
1086, Wheaton, IL 60189

**Phone:** 630-752-0120

**Web Site:** www.ipp.org

**Meetings:** The Illinois Prairie Path  
Board of Directors meetings are held  
at 7:30 p.m. on the first Tuesday of  
each month at Rathje Park, 616  
Delles Avenue, Wheaton. Members  
are always welcome to attend!

## *The Illinois Prairie Path Board of Directors 2002*

*Don Kirchenberg, President  
Glendale Heights*

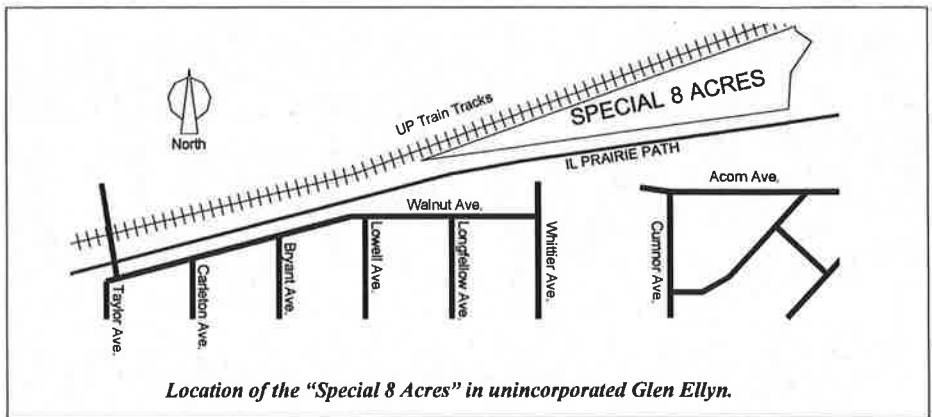
*Dick Wilson, Vice President  
DesPlaines*

*F. Paul Mooring, Treasurer  
Glen Ellyn*

*Nancy Becker, Secretary  
Willowbrook*

*Nancy Wasielewski, Office  
Manager and Newsletter Editor  
Glenview*

*Paul Aeschleman, Oak Park  
Bob Bernero, Glen Ellyn  
Mike Cross, Naperville  
Charles Johnson, Lisle  
Eric Keeley, Oakbrook Terrace  
Jean Mooring, Glen Ellyn  
Erik Spande, Winfield  
Rob Sperl, Warrenville  
David Tate, Winfield  
David Watts, Glen Ellyn*



*Location of the "Special 8 Acres" in unincorporated Glen Ellyn.*

## **"Save the Special 8" Update**

*(Continued from page 1)*

"The new owner is telling the Forest Preserve Commission that he believes the parcel is worth \$3-4 million after paying only \$250,000 for all 8.3 acres on January 15, 2002. The property was listed for sale at \$275,000," Kirchenberg said. "This statement of an increase in property value from \$250,000 to \$3-4 million in one month is a cause for concern. We have been told by the County we need to watch over the parcel."

If you see any vehicles on the Special 8 acres, please call the DuPage County Sheriff's 911 emergency phone number 24/7. The sheriff has jurisdiction on the Illinois Prairie Path right-of-way. There is no legal access for a motor vehicle onto the parcel. The sheriff will ticket the vehicle drivers for driving on/ across the IPP.

In addition, Kirchenberg noted, the DuPage County Forest Preserve District's Law Enforcement Rangers have begun to patrol the parcel. "We need to help them," he said. "If we see any clearcutting of the parcel we should call their 630-933-7240 emergency number 24/7. Please pass along this news to neighbors and other trail supporters."



**"Special 8" Volunteers Needed**  
Some Illinois Prairie Path members have begun to take time to fill the eroded portions of the Glacial Ridge Natural Area kame on the IPP side. Dead tree branches are placed across the eroded sections. Hopefully before the spring rains and summer bicyclists arrive, we can help stop some of the erosion. In addition by blocking off some of these spots, it will help slow down the rocks that fall onto the IPP with or without the encouragement of children that play along the top ridge. Anyone looking for a good workout is asked to contact The Illinois Prairie Path at 630-752-0120. "Let me know if you can help," Kirchenberg said.

**Environmental Impact**  
These special 8 acres have many valuable

plants including one threatened species, as identified by two naturalist experts. The land is also adjacent to the Illinois Prairie Path, a 61-mile-long multi-purpose trail for hikers, joggers, bicyclists, equestrians, nature lovers and picnickers. The IPP trail is the first successful rail-to-trail conversion in North America. Along the trail and part of the 8.3 acres is a unique geological formation. This formation is a glacial kame deposited 10-15,000 years ago when the last glacier moved through the area.

# Earth Day Cleanup

(Continued from page 1)

rie Path and the Great Western Trail on Saturday, April 27, between 9 a.m. and 12 noon from a table next to the Villa Park Historical Society Museum on Villa Avenue.

## Two Areas of Concern

Two primary areas along the 61-mile IPP with serious litter problems are:

1. Batavia Spur at Butterfield Road
2. Elgin Branch behind the Oliver Square Shopping Center (between North Avenue and Highway 59)  
To volunteer, please call Charles Johnson at 630- 852-2933.

## Cleanup Recommendations

Volunteers will want to wear work gloves and clothing appropriate for the weather. The entire right-of-way of the two trails, which varies in width from about 20 feet to 100 feet, should be cleaned. In addition, small paths and walkways that feed into the main trails and also the trail parking lots should be cleaned.

In both DuPage County and Kane County full trash bags may be left at each road intersection along the IPP and the GWT and they will be picked up on Monday, April 29.

In Cook County trash bags should not be left along the IPP, but rather all trash bags should be disposed of by either placing them in or near one of the Illinois Prairie Path's trash receptacles or by taking the bags home and disposing of them with your own recyclables and trash.



Join our  
2002  
Earth Day  
Cleanup  
along all  
61 miles of  
the Illinois  
Prairie  
Path and  
12 miles of  
the Great  
Western  
Trail.

## Coordinators for Earth Day Cleanup

*You can make a difference! To volunteer for the cleanup,  
call one of our coordinators today!*

<b>Cook County:</b>	Paul Aeschleman, 708-848-6023
<b>Hillside:</b>	Nancy Becker, 630-654-1019
<b>Elmhurst:</b>	Eric Keeley, 630-691-1413
<b>Villa Park:</b>	Hosana Korynecky, 630-530-0386
<b>Lombard:</b>	Joelyn Kott, 630-620-5718
<b>Glen Ellyn:</b>	Tom Barriball, 630-790-3171
<b>Naperville:</b>	Mike Cross, 630-416-1415
<b>Wayne:</b>	Gladys Johnston, 630-584-2491
<b>West Chicago:</b>	Birt Hurlbert, 630-293-1062
<b>Wheaton:</b>	Helen Bartlett, 630-668-1759
<b>Batavia Spur:</b>	Ed Barsotti, 630-820-8759



<b>Elgin Branch at North Avenue:</b>	Charlie Johnson, 630-852-2933
<b>Elgin Branch in S. Elgin:</b>	Jeanne Bereza, 847-742-1294
<b>Great Western Trail:</b>	Don Kirchenberg, 630-682-9297

**For additional locations or questions:**

**Email:** FrndsGrtWstnTrl@aol.com

**Call home office 630-682-9297, Don Kirchenberg, President, IPPc**



**L**itter on the Illinois Prairie Path and the Great Western Trail is picked up solely by volunteers. Your help on Earth Day is both needed and appreciated. However, it is also important to remember that since all litter on these two trails is picked up by volunteers, any litter spotted along the trails at any time throughout the year should also be picked up. Thanks for your help!



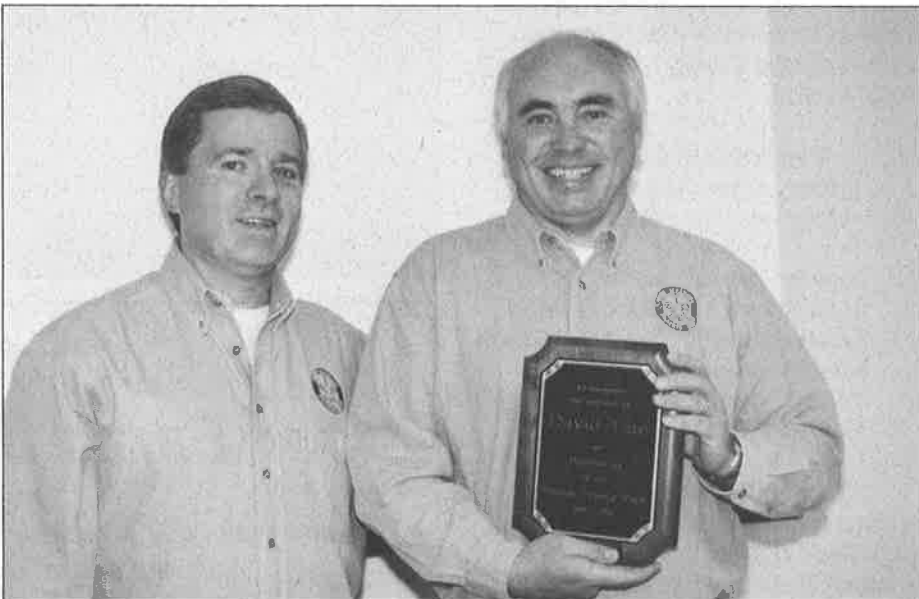
# The Illinois Prairie Path 2001 Annual Meeting

*By Jean Mooring,  
IPP Board Member*

The Illinois Prairie Path held its 37<sup>th</sup> Annual Meeting on Sunday, November 4, 2001 at The Abbey, Elmhurst, courtesy of the Elmhurst Park District. The seventy members and friends who attended included eleven candidates for local and state offices, eight of them incumbents; all will be on the primary election ballot in the spring.

New Illinois Prairie Path President Don Kirchenberg of Glendale Heights welcomed the enthusiastic crowd and presented a plaque of appreciation to his predecessor David Tate of Winfield who had resigned the presidency on July 3 after serving the corporation with distinction since Dec. 3, 1996. David promised to continue on the board to work on the Earth Day cleanup, the Winfield Mounds historical trail and the other projects he had coordinated as president.

After introducing the current and former IPP board members and all the political candidates in attendance, President Kirchenberg reviewed the major achievements of the past year including



*Don Kirchenberg presents plaque of appreciation to David Tate with thanks for a presidential job well done. (Photo by Nancy Wasielewski)*

the best Earth Day cleanup ever, the completion by DuPage County of the beautiful \$800,000 bridge over Taylor Avenue in Glen Ellyn, the installation by the Wheaton Public Works Department of the new Helen Turner memorial fountain paid for by The Illinois Prairie Path, and the installation of the Ralph Franzen memorial bench on the Elgin Branch west of Klein Creek also

paid for by The Illinois Prairie Path although most of the cost of the concrete pad for the bench was a donation from Elliot Construction Company of Glen Ellyn. He mentioned various DuPage County projects coordinated by Deborah Fagan, Trail Consultant to the DuPage County Division of Transportation and Chief Planner for the DuPage County Department of Devel-

## Illinois Prairie Path Members

- *Most are from Illinois*  
- 1,830 members
- *Outside of Illinois -*  
62 members are from  
25 other states
- *Membership Total -*  
1,892



## IPP: Nov. 2000 – Oct. 2001

- 1,613 - # of membership checks received
- \$23.59 - average contribution
- 245 - # of new members
- 6 - # of new Lifetime Members (\$500)



## Suburbs/Cities with Most IPP Members



- Wheaton: 274
- Glen Ellyn: 117
- Lombard: 114
- Naperville: 113
- Elmhurst: 97
- Chicago: 76
- Winfield: 71

## Most Popular Membership Categories

- Individual Members (\$10) – 527
- Family Members (\$15) – 495
- Contributing Members (\$25) – 331
- Lifetime/Society Members (\$500+) – 44



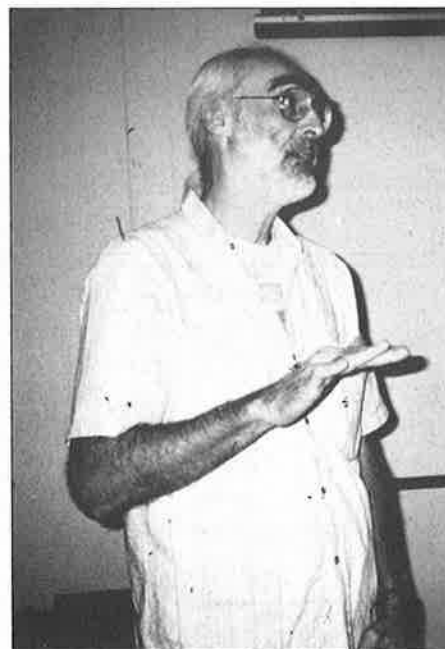
(Continued from page 4)

opment and Environmental Concerns, such as the informative signs at various prominent locations along the Illinois Prairie Path and the Great Western Trail and the improved Path crossing at Hill Avenue, Glen Ellyn. Kirchenberg urged everyone to volunteer for our trail-related maintenance activities, which are always a lot of fun, and he asked government agencies to “Save the Special 8 Acres”, The IPP’s newest project.

Next on the program was IPP Treasurer Paul Mooring, Glen Ellyn, who said our financial position is excellent. (See the Treasurer’s Report, page 6.) Then Office Manager / Membership Chair and Newsletter Editor Nancy Wasielewski, Glenview, reported on a number of Illinois Prairie Path membership statistics. The boxes on pages 4-5 summarize membership information for the past year.

Paul Mooring took the floor again as chairman of the nominating committee and announced that the terms of the following directors were expiring and that they had all agreed to be nominated for an additional three-year term: Nancy Becker, Willowbrook; Charles Johnson, Lisle; Eric Keeley, Oakbrook Terrace; Rob Sperl, Warrenville; and David Watts, Glen Ellyn. There were no nominations from the floor and all five candidates were elected by acclamation.

The principal speaker for the afternoon was Roger Kotecki, DuPage County Board Member and Forest Preserve



*(Top Photo) Featured speaker Roger Kotecki, longtime DuPage County Board Member and Forest Preserve Commissioner, spoke at the annual meeting about the county’s plans for the forest preserves and trails. (Photo by Nancy Wasielewski)*

*(Left photo) Marlin Bowles from the Morton Arboretum spoke eloquently about the flora, fauna and geology of the “Special 8” acres in unincorporated Glen Ellyn. (Photo by Jean Mooring)*



# IPP's 2001 Annual Meeting Report

## The Illinois Prairie Path

### Treasurer's Report

#### Cash Balance, November 1, 2000

First National Bank of Chicago (checking)	\$19,950.82
Stein Roe Cash Reserves (Money Market Fund)	99,252.09
<b>TOTAL</b>	<b>\$119,202.91</b>

#### Revenue

Donations, Grants, Bequests	\$10,273.10
Dues	38,069.00
Sales (Maps, T-shirts, Patches, "Guides", etc.)	2,367.00
Interest	4,625.13
Miscellaneous	9.00
<b>TOTAL</b>	<b>\$55,343.23</b>

#### Expenditures

Office Manager (Salary)	\$8,665.00
Newsletters (Printing and Mailing)	7,601.51
Membership/Flyers	258.81
Maintenance Supplies	35.86
Litter Removal and Port-o-let	4,688.81
Postage	364.54
Office Supplies	0.00
Telephone	478.74
Special Projects	6,184.58
Special Events	589.63
Prairie Restoration	7,416.39
Other Printing	1,217.05
Merchandise for Sale	1,811.00
Donations	3,100.00
Travel/Board Expenses	44.87
Legal and Consulting	0.00
Petty Cash Fund	1,000.00
Miscellaneous	72.25
<b>TOTAL</b>	<b>\$43,529.04</b>

#### Cash Balance October 31, 2001

First National Bank of Chicago (checking)	\$27,367.83
Stein Roe Cash Reserves (Money Market Fund)	103,649.27
<b>TOTAL</b>	<b>\$131,017.10</b>

Submitted by Paul Mooring, Treasurer

(Continued from page 5)

Commissioner from District 6. Roger is a longtime advocate of sound land use planning and open space preservation in DuPage County. He is a candidate for the single Forest Preserve Commission seat representing District 6 when the commission and the county board become separate bodies later this year. He discussed trail improvement plans being coordinated by both agencies with the major goal of developing regional trails along the county's principal waterways, Salt Creek and the East and West Branches of the DuPage River, to be connected with the Illinois Prairie Path in central DuPage County and other east-west trails along the Lake Street corridor in northern DuPage, the 75<sup>th</sup> Street corridor in southern DuPage and the Butterfield Road corridor.

Marlin Bowles, a staff naturalist at the Morton Arboretum, gave a brief slide presentation illustrating some of the unusual native plants found at the "Special 8 Acres", the natural area adjoining the Prairie Path in rural Glen Ellyn which The Illinois Prairie Path corporation is working very hard to save from development. The more than one hundred native plants found at the site include five varieties of oaks, American hazelnut, wild hyacinth, bracken fern, Short's aster, prairie violet, and the Illinois threatened pale vetchling, to name a few. The geological history of the site is equally interesting because the most prominent feature is a high glacial ridge of stone and gravel along the southern edge of the property, a remnant of a glacial kame or rounded hill deposited by the last glacier which covered this area with ice and snow a mile deep some 10,000 to 15,000 years ago.

(Continued on page 7)



# IPP to Benefit from Route 56 Improvements

*By Rob Sperl  
IPP Board Member*

Route 56 improvements were the subject of an Illinois Department of Transportation (IDOT) meeting held in January with representatives of Wheaton, Warrenville, DuPage County Forest Preserve District and selected trail advocacy groups.

A number of pedestrian and bikeway considerations were discussed for the proposed improvements to Route 56, locally known as Butterfield Road. The work that is proposed consists mainly of expanding the road from two lanes to four lanes with a median. This expansion will occur between Naperville Road and Route 59.

The Illinois Prairie Path parallels this route between St. James Farm east of Winfield Road and the intersection of Warrenville Road and Route 56. IDOT

has assured local representatives that the Illinois Prairie Path will remain open during the future construction. Access along the path should not be restricted as the underpass under Butterfield Road already meets the standards IDOT needs.

There are two areas along the Prairie Path that will benefit from this construction:

- The project will create a 10-foot-wide path that will run from the northwest corner of Herrick Lake Forest Preserve to the Prairie Path where it crosses under Route 56. This project is not part of the IDOT work, but is a project that has been undertaken by the Forest Preserve District separately.
- Additional access to Blackwell Forest Preserve is being discussed by local representatives from the intersection of Batavia Road and Route 56 east on a trail along the north side of the road.

Some local funding will be needed for this, as IDOT will not pay for recreational trails. However, IDOT's roadway improvement will be constructed to allow for this eventual new connection.

A public meeting to gather input from anyone interested will be held in the next few months. Initial construction is scheduled for fall 2004 with the roadwork occurring in 2005.



## **Join the Fun! National Trails Day History Discovery Ride**

DuPage County and The IPP are organizing a History Discovery Ride in celebration of National Trails Day on June 1. The ride will be designed as a family oriented self-guided tour that will allow trail users to learn more about natural and historical sites along the Illinois Prairie Path. The ride provides for flexible starting points anywhere along the Main Stem between Elmhurst and Wheaton. Walkers and riders of all ages will be invited to participate.

We are also looking for volunteers to man several "stops" (historical and natural sites) along the ride from 9:00 a.m. to 2:00 p.m. If you would be interested in volunteering, please contact Deborah Jan Fagan, DuPage County Trail System Coordinator, at 681-2221 or email to [dfagan@dupageco.org](mailto:dfagan@dupageco.org).



## **2001 Annual Meeting Report**

*(Continued from page 6)*

Bowles strongly recommended acquisition and preservation of this site by a public body such as the Forest Preserve District of DuPage County or the Glen Ellyn Park District.

Last on the program were Paul and Jean Mooring who presented the annual Prairie Path slide show. Highlights of the show included the IPP spring cleanup, prairie burns, maintenance and repair projects done by our volunteers; the installation of the Helen Turner memorial fountain and the Ralph Franzen memorial bench; the new park-like entrances with drinking fountains, display cases, benches and trash containers at various street intersections in Lombard installed by the village; and improvements provided by DuPage County such as rerouting of the Path at Hill Avenue, Glen Ellyn, and the handsome

new informative signs placed at various street intersections along the Path. The major achievement of the year was the construction by the DuPage County Division of Transportation of the bridge over Taylor Avenue in Glen Ellyn. The Moorings' slides documented the progress of the project month by month following the groundbreaking on Nov. 28, 2000. The grand opening took place on July 10. DuPage County Board Chairman Bob Schillerstrom cut the ribbon.

The meeting concluded with the usual delicious cider, cakes and cookies provided by the board members and their spouses. To show the Prairie Path volunteers' spirit following the September 11 tragedy, our 1987 Take Pride in America Award, presented to us all by the Reagan administration, was on display, accompanied by a small but spunky American flag.

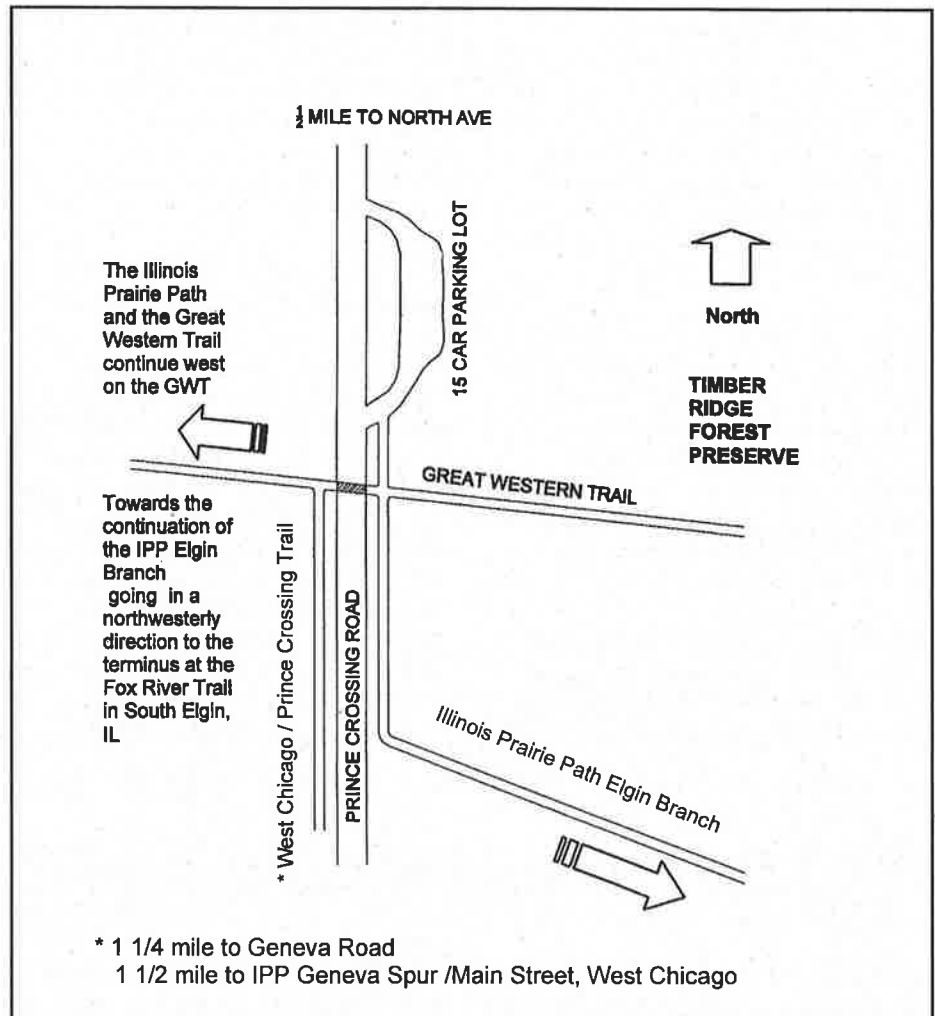
# New Trail Configuration at Prince Crossing Road

*By Rob Sperl,  
IPP Board Member*

Some of you hardy souls who have been out on the trail this winter may have noticed the construction that occurred along Prince Crossing Road in West Chicago. In order to improve safety, the previous two crossings from the IPP Elgin Branch and the Great Western Trail have been consolidated into one crossing at the Great Western Trail crossing by the City of West Chicago Public Works Department.

In addition to this slightly different configuration, many other improvements have been made. Just north of the crossing on the east side of the path, a 15-stall parking area has been created specifically for trail users. Another addition this road improvement has brought is a path along the west side of Prince Crossing that continues south from the crossing to Geneva Road.

This is a beautiful 11-foot-wide asphalt path with extensive pavement marking and signs. At the intersection of Prince Crossing and Geneva Road, one can continue south approximately a quarter of a mile to link up with the IPP Geneva Spur at Main Street, West Chicago. Unfortunately, this connection is made on the road although there is an improved shoulder for easier travel.



Improvements along Prince Crossing will be completed this spring and will

include signage, final trail surfacing and landscaping.



## IPP Annual Bird Walk in Pratt's Wayne Woods



*Pack your binoculars and a picnic lunch and join IPP members to look for spring arrivals at the annual IPP Bird*

*Walk in Pratt's Wayne Woods on Saturday, May 11! Meet at 9 a.m. in the far back parking lot. From Rt. 59 go west on Army Trail Road to Powis Road in Wayne, then go north to Forest Preserve entrance. The group will have a picnic after the walk.*

*For more information, call Dick Wilson between 8 a.m. and 7 p.m. at 847-299-7882.*





# IPP Mailbag



## **Copies of "Living Legacy" Book Still Available**

My cousin, Fred Stark, and I are the co-authors of the book, *The Living Legacy of the Chicago, Aurora and Elgin*, and we would like to inform you and request that you let your members know that supplies of this book are dwindling down. Fewer than 130 copies remain in our inventory. There may be a few more in the inventories of area retail stores carrying the book. In any case, however, we are not intending to have any more copies printed. When these are gone, that will be it.

So, if there are IPP members or readers of your *Newsletter* who have considered buying the book either for themselves or as a gift for a friend or relative, they may want to do so while supplies last. As far as we are aware, *The Living Legacy of the Chicago Aurora and Elgin* contains the most comprehensive history of the development of the Illinois Prairie Path and of The IPP corporation to date. It also is the only book that combines the histories of the Illinois Prairie Path and the Chicago Aurora and Elgin Railway in one volume.

We appreciate the fact that you have featured our book on your website. Those of your members who have internet access may want to be aware of our website at [www.wellerstark.com](http://www.wellerstark.com). There, they can read the preface and table of contents of our book and they can find sample photos and maps and ordering information.

In addition to the retail stores you list on your website which sell our book, there are several more including West Suburban Model Railroad Center at 105 S. River Road (Ill. Rte. 25), Suite E in North Aurora, IL 60542 and The Book Nook at 241 W. Wilson St. in Batavia, IL 60510. The book can also be ordered directly by mail for \$54.95 plus \$5 shipping and handling by call-

ing 1-800-999-6901 or writing to WS Publications, PO Box 364, North Liberty, IA 52317.

Again we thank you for giving space to The Living Legacy of the Chicago Aurora and Elgin on your website and for promoting it among your members and friends. We also thank you for all your efforts to preserve and promote the Illinois Prairie Path and the memories of the old Chicago Aurora and Elgin Railway.

**Peter J. Weller**  
Washington, IA

## **New Member Says Thanks!**

I have run on the Prairie Path almost daily for the past 12 years. Last summer I rode in various stages and loops the entire trail system.

The Illinois Prairie Path has tremendously enhanced the quality of life for me and my family. My joining The IPP corporation and contributing financially towards the maintenance of this wonderful trail is way overdue. Please accept my thanks, my gift and my apology.

**Richard J. Zylstra**  
Lombard

## **IPP Policy on Use Of Fuel Cell Vehicles**

We are hearing more and more about these highly efficient "fuel cell" vehicles that are designed for the transport of one person and will soon be available to the general public. Does The IPP have a policy in place regarding the use of such vehicles on the trail? If my understanding is correct that their only emission is water, they will be a great benefit to society, but I fear that if they are allowed on trails, our trails will soon be overrun.

**Michael Sinner**  
Chicago

*The use of any motorized vehicles is not allowed on the Illinois Prairie Path. Our policy is not expected to*

*change with the introduction of this new type of transport. We only welcome foot, bike and horse traffic on our trail system.*

## **Ideas Needed from Cyclists For CATS Study**

Hey Chicagoland cyclist! The Chicago Area Transportation Study (CATS) sets the long-range transportation agenda for metropolitan Chicago. Those priorities should include projects to benefit cyclists. If you want a better cycling environment, send me your ideas for transportation projects to do just that. Include a project title, description, location and how many folks you think would use it. For more information, see the CATS website at [www.catsmpo.com](http://www.catsmpo.com).

**Derrick James,**  
CATS Bicycle Representative  
CATS Highway Working Group  
[Derrick@biketraffic.org](mailto:Derrick@biketraffic.org)



**The Illinois Prairie Path was voted "Best Place to Bike"**



**in the 2nd annual "Best of Citysearch" guide at [citysearch.com](http://citysearch.com).**

# BE AN ILLINOIS PRAIRIE PATH VOLUNTEER!

The Illinois Prairie Path, a not-for-profit corporation, welcomes volunteers to help participate in trail improvement and trail management issues.

Here are a number ways you can get involved!

- **Attend Board Meetings:** The Illinois Prairie Path Board of Directors meets the first Tuesday of every month (except August and November). Open meetings are held at 7:30 p.m. in the Members' Room (2<sup>nd</sup> floor) at Rathje Park, 616 Delles Ave. in Wheaton, IL
- **Help on Workdays:** Monthly warm weather workdays are usually held on the third Saturday morning of the month spring through fall at a location along the trail to add, improve, maintain, or change a trail amenity. Example: painting a water pump, weeding a flower box, etc. No special skills are required – just energy and a community spirit.
- **Help with Special 8 Work Projects:** See page 2 for details on a special project.
- **Assist with Prairie Burns:** Prairie burns are conducted every spring (weather permitting) to prepare the several prairies maintained by The IPPc. Volunteers are needed to help rake and prepare the prairies for the burn.
- **Join our Earth Day Cleanup:** The 2002 Earth Day cleanup will be held this year on Saturday, April 27. You can help by volunteering to be an Annual Earth Day Cleanup coordinator and/or volunteer. Each spring approximately 1,000 volunteers go out to pick up trash on the 61 miles of the Illinois Prairie Path and the Great Western Trail and their related paths. Many more volunteers are needed throughout the year as well to maintain a section of the trail.
- **Be a Map Box Filler:** Volunteers are needed to help us keep an eye on our free Illinois Prairie Path map boxes and refill them as needed. The supply of maps will be provided.
- **Be a Trash Monitor:** Adopt a trash can and watch it to see if it is being maintained by the contracted service provider. If the containers are not emptied as scheduled, the volunteer is asked to make followup phone calls.
- **Be a low impact trail user!** Pack in and pack out any lunch bags, drink containers, and other products you bring along when using the trails. IPP membership dues are used to pay for and maintain 15 trash containers (and one Port-o-Let at Army Trail Road) along the trail.
- **Renew and help build membership for The IPPc.** Spread the word of the "good work" of The IPPc to your neighbors, friends and relatives. Encourage their membership in our organization.
- **Buy a shirt, map, patch or other mail order IPP product.** Small profits from the purchase of these items helps fund trail improvements and amenities.

To volunteer, send the form below to:

The Illinois Prairie Path, PO Box 1086, Wheaton, IL 60189

I would like to volunteer to help The Illinois Prairie Path with the following:

Name \_\_\_\_\_ E-mail address: \_\_\_\_\_

Daytime Phone \_\_\_\_\_ Evening phone \_\_\_\_\_

# *Mission Statement for The Illinois Prairie Path, a not-for-profit corporation*

*Adopted March 5, 1991, revised February 4, 2002*

**T**o advise and assist the various governmental agencies responsible for maintaining and developing a safe, public, multiple-purpose trail open to all called the Illinois Prairie Path, located on, or connecting the various segments of, the right-of-way of the old Chicago, Aurora and Elgin electric railroad in Cook, DuPage and Kane Counties, Illinois. Major concerns of the corporation are recreation, prairie restoration, land preservation and beautification, conservation of natural resources and ecosystems, preservation and interpretation of historic sites, and the connection of the Illinois Prairie Path to other trails to form a regional system of "greenways".

## **Goals**

1. Complete the Cook County section to First Avenue, Maywood and east across the Des Plaines River to the CTA station in Forest Park. Needs site plan, adequate funding, responsible management and continuity.
2. Promote the development of connecting trails:
  - a. Along the East and West Branches of the DuPage River,
  - b. To various points along the Great Western Trail (support constructing a bridge over Grace Street, St. Charles Road and the Union Pacific Railroad in Lombard; add safe non-motorized crossings with push-button lights and sidewalks at regular one-mile intervals along North Avenue),
  - c. Through the Lincoln Marsh to connect the IPP to the Great Western Trail,
  - d. Along the Butterfield Road corridor with push-button lights and sidewalks for neighborhood access,
  - e. Along Salt Creek to the Illinois-Michigan Canal,
  - f. Along the EJ&E RR r/w to the Illinois-Michigan Canal,
  - g. Any other trails connecting with the Illinois Prairie Path.
3. Support the following standards and management goals.
  - a. Preserve and enhance trail continuity; minimize parking lot encroachments on the Path but provide adequate parking for Path users where necessary; mitigate impacts of new roads, railroads etc. crossing the Path; support grade separations or push-button stoplights if grade crossings cannot be avoided.
  - b. Support continued use of relatively inexpensive limestone screenings as the surface material acceptable to most users, with asphalt reserved for short stretches having major erosion or other special problems; encourage path widening to ten feet in high-traffic areas.
  - c. Support separate trails for horses where equestrians are more than 1% of users, according to officially recognized user surveys.\*
  - d. Provide amenities, such as logo signs, display case stands with maps of the trail, plantings, benches, drinking fountains, trash containers, toilet facilities, and mile markers. Provide a few signs indicating points of interest.
  - e. Support police protection all along the Path.
4. Support official recognition by DuPage County and other governmental agencies concerned in any way with the trail that the name of the trail on the old CA&E right-of-way is and always has been the Illinois Prairie Path, the name given it in 1964 by May Theilgaard Watts and the other Path founders. Support official recognition of the green-and-white logo designated by the founders and registered with the Illinois Secretary of State. It has been used and displayed on the trail since 1967.

\*All surveys done to date agree that bicyclists represent 80% of users on all sections, and joggers, 15%; the rest are mainly hikers except in the Wayne area, where more than 1% of regular Path users are equestrians.



## The Illinois Prairie Path Newsletter

P.O. Box 1086

Wheaton, IL 60189

Nonprofit Organization  
U.S. POSTAGE  
PAID  
Carol Stream, IL 60188  
Permit No. 621

DATED MATERIAL

ADDRESS SERVICE REQUESTED

We're on the Web!  
[www.ipp.org](http://www.ipp.org)

### ILLINOIS PRAIRIE PATH SHIRTS, GUIDES & GIFTS

- **NEW!** Show your support for the IPP by wearing one of our new shirts this spring. See photo of Don and David wearing the shirts on page 4. IPP Shirts feature logo embroidered (green thread) above the left breast pocket of this 7.26 oz. 100% cotton long sleeve denim shirt in both natural (light khaki) and light blue colors. Shirt also features wood tone buttons and double needle stitching. Sizes available include S, M, L and XL. Total price of \$51 (\$45 per shirt plus \$6 shipping)

Quantity/Size      Amount

\_\_\_\_\_

- **IPP Guide:** This 32-page guidebook contains information about the history, geology, trees, flowers, birds and animals of the Illinois Prairie Path. Cost: \$4.75 per copy includes shipping

Quantity      Amount

\_\_\_\_\_

- **Gift Memberships:** Available in amounts ranging from \$10 for Individual members to \$1,000 for Society Lifetime Memberships. Please include names and addresses for gift memberships on a separate piece of paper. Members receive an IPP multicolor map and IPP newsletters.

Quantity/  
Membership

Type

\_\_\_\_\_

Make checks payable to: The Illinois Prairie Path

Total Amount Enclosed: \_\_\_\_\_

Name \_\_\_\_\_ Phone \_\_\_\_\_ Email \_\_\_\_\_

Address \_\_\_\_\_ City \_\_\_\_\_ Zip Code \_\_\_\_\_

Send order form and check to: The Illinois Prairie Path, PO Box 1086, Wheaton, IL 60189