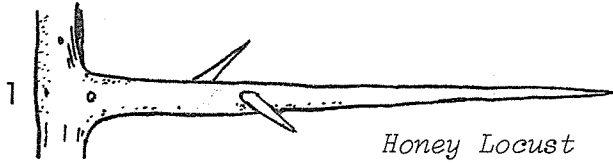


THE ILLINOIS PRAIRIE PATH NEWS LETTER
 Fall 1970
 Helen Turner - Editor

WHAT TO SEE

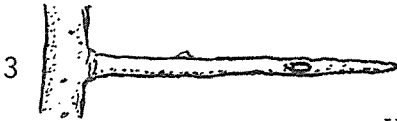
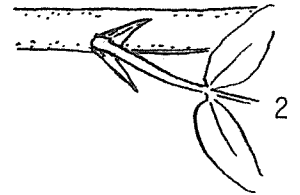
The edging that nature puts around a forest is lovely to look at but difficult to penetrate . . . so difficult that it forms an effective barrier against grazing animals. The same beautiful thorny growth borders miles of the *Path*. Thorns, large or small, arm many of the trees and shrubs. You cannot miss them if you stray a few feet away from the well-traveled path. Next time really look at them.



Honey Locust
 Compound thorns on
 branches and trunk.

TALL TREES

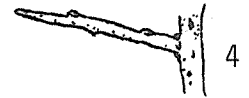
Black Locust
 Paired thorns
 at leaf base.



Wild Crab
 Stiff modified twig.

SMALL TREES

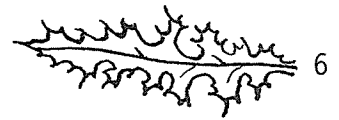
Wild Plum
 Modified twig.



Hawthorn
 Real thorn.

NON-WOODY PLANT

Thistle
 Even leaves
 have prickles.

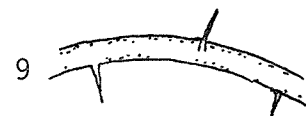
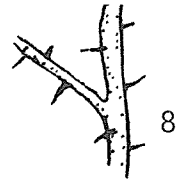


SHRUBS



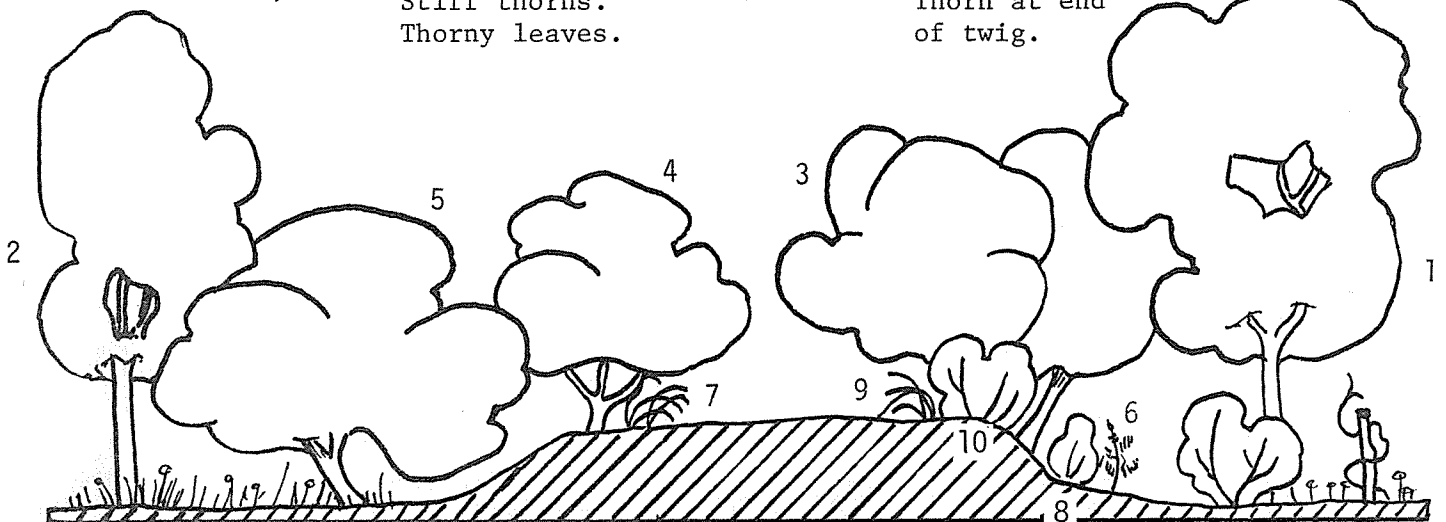
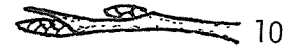
Blackberry
 Hooked thorns.
 Thorny leaves too.

Rose
 Prickles.



Black Raspberry
 Stiff thorns.
 Thorny leaves.

Buckthorn
 Thorn at end
 of twig.



THE ANNUAL MEETING will be held November 8 at 2 p.m. in the Thornhill building, The Morton Arboretum, Lisle. The program will include the election of five members to the Board of Directors, brief reports of achievements in 1970, and a talk on a timely topic. The name of the speaker will be announced in the newspapers. To reach the Thornhill building, enter the Arboretum grounds from Park Blvd. and drive to the parking lot. This is the only direct notice you will receive. Mark your calendar and watch the newspapers.

WORK OF OUR VOLUNTEERS

So much has been accomplished this summer that it is almost impossible to keep track of it. The bicycle paths through *Elmhurst* and south of Roosevelt Road (one mile) in *Wheaton* are completed. Three more sections have been adopted. The new custodians are Mr. and Mrs. Edward Lathal, Mr. and Mrs. F. Paul Mooring and Mrs. Raymond Willer. Each mile of the Path has its own unique characteristics and each organization hopes to create something special on its chosen piece. *In order that basic standards of overall development be assured, we ask that any contemplated major changes, especially those involving money, be cleared through the board of directors of The Illinois Prairie Path, the parent organization that has jurisdiction over and responsibility for the entire 27 miles.*

WALKS

Two members' walks were scheduled this fall . . . September 19 and October 10. Plans are being drafted to provide leaders for groups wishing a guided nature walk. For information call the Members' Room (see schedule below). More guides are needed. If you would like to volunteer for this post, please let us know.

YOU SHOULD KNOW

The Members' Room, 616 Delles Street, Wheaton . . . Phone 665-5310 is open as follows:

- Wednesday noon to 4 p.m.
- Friday noon to 4 p.m.
- Saturday 10 a.m. to 1 p.m.

Come see us.

Our mailing address is still Box 5, Wayne, Illinois, 60184.

Mr. Brooks McCormick has graciously given us permission to cross St. James farm lying east of Winfield Road near *Warrenville*. The route to be followed through the farm is marked with green arrows. We are most appreciative of this kindness and ask that you stay on the indicated path and close the gate as you leave.

A good bicycle path is a good Honda path too, so we are sometimes overrun with motor traffic. This is strictly against regulations and we are attempting to control it. If you see any motor vehicles, any hunting, or any acts of vandalism will you help us by notifying the police or sheriff? If you wish to join our staff of Prairie Path Patrol agents write Mr. C. J. Peterson, Rt. 1, Box 396, West Chicago, 60185. Agents are privileged to wear an official star, a great help when facing a patrol problem.

Mrs. Sindt, our principal speaker, has a full schedule this fall. She is booked to give her illustrated talk to service organizations, civic groups, scouts, women's clubs (Oak Park Christian Women's Club, for example), and many more. Should you care to arrange with her for a talk, call 355-1988.

"The mills of God (and politicians) grind slowly" . . . and sometimes we are discouraged. Perhaps at our annual meeting we can report positive action and results in Kane County, on the extension of our lease and consequent recognition as a National Trail (for at least part of the Path), and on further resurfacing. We are still hard at work.